



LIGHTING REIMAGINED

720W LED



Water Resistant IP 65 Rating



Professional Cultivator Designed



5 Year Warranty



DLC listed Peace-of-Mind
IONLED 19879 FSG 25 D1



Lifetime L90 > 54,000 hrs



PPF ≈ 1872 PPF (μmol/sec)



INTERTEK 5000150

PLEASE READ THESE INSTRUCTIONS BEFORE INSTALLATION AND USE

CONTENTS

• LED 720W System

• Two Rope Ratchets

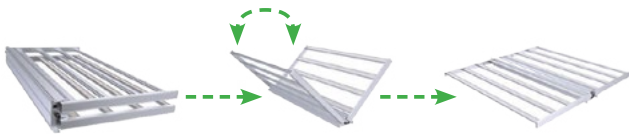
INSTALLATION

1. SWITCH OFF MAIN POWER

To reduce the possibility of any serious damage or injury, always take the proper precautions. Please be sure to always unplug the fixture before moving or cleaning.

2. REMOVE FIXTURE FROM BOX AND PLACE ON FLAT, STABLE SURFACE.

3. UNFOLD THE FIXTURE WITH LEDS FACING DOWN.



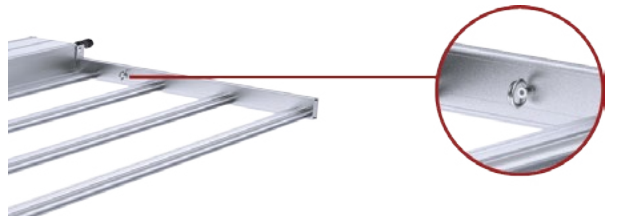
4. WARNING!

Never handle the fixture using the LED bars as it can result in damage to the light and performance. Be sure to only lift from the primary fixture structure.



5. MOUNTING

The ION LED 720W can be mounted to the supporting structure or frame by suspending with cables (not provided) or other suspension methods using the four mounting rings on the fixture. Maximum fixture weight is 26.9 lbs.



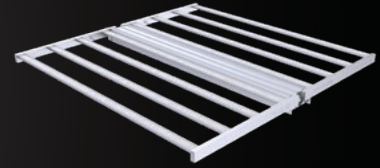
6. POSITIONING

Mount the light bars at least 8" from the top of your canopy or garden for optimal light efficiency and consistency. Always allow for proper ventilation of fixture.





720W LED



SAFETY FIRST

The ION LED 720W system is reactively cooled without moving components. Please do not open or disassemble the fixture, as it contains no service parts inside. By doing so you may cause harm to the fixture and risk voiding the warranty.

- Adhere to all local rules and regulations when installing or using the fixture.
- It is recommended to always wear protective gloves and glasses during installation.

- Be sure to always disconnect from the mains before performing any maintenance to the fixture.
- Due to excessive heat, do not touch the LED fixture while the light is on.
- Always allow at least 10 minutes for the LED fixture to cool down before handling.
- Do not touch the LED diodes.
- Keep the power cord away from any hot surfaces.

- Do not plug this system into a supply voltage other than what is instructed on the fixture.
- Do not use the LED fixture if the power cord is damaged.
- Do not use the LED fixture if the unit has been dropped, or any parts have been damaged.
- Keep this product away from children.

WARNING

RISK OF ELECTRICAL SHOCK

To reduce the possibility of any serious damage or injury, always take the proper precautions. Please be sure to always unplug the fixture before moving or cleaning.

LIGHT BARS AND POWER SUPPLY ARE SPLASH-PROOF BUT NOT WATERPROOF

If the light bar, for any reason becomes submersed, first turn off the circuit breaker, then unplug the fixture before removing from water.

CAUTION

RISK OF OVERHEATING OR FIRE

To reduce the risk of overheating or fire, do not place operating fixtures face down on a flat surface. Be sure to always allow for proper ventilation of fixtures and power supplies.

EXTREMELY HOT

The LED and heat sink surfaces may be hot. Allow the proper amount of cooling time before handling.

PREVENT EYE DAMAGE

Do not look directly at the unprotected LED fixture when in use.

RISK OF PERSONAL INJURY

Be sure to disconnect all power sources before examining or installing luminaire, since the fixture may be hot. To reduce risk of injury, turn off or disconnect power and allow adequate time for cooling before handling. Fixture must be grounded in accordance with appropriate codes. Failure to do so may result in serious injury or death. Be sure all power is off prior to installing fixture codes.

WARRANTY

GGen Distribution Corp. warrants the mechanical and electronic components of their product to be free of defects in material and workmanship if used under normal operating conditions for a period of five (5) years from the original date of purchase. If the product shows any defects within this period and that defect is not due to user error or improper use, GGen Distribution Corp. shall, at its discretion, either replace or repair the product using suitable new or reconditioned products or parts. GGen Distribution Corp. warranty liability extends only to the replacement cost of the product. In case GGen Distribution Corp. decides to replace the entire product,

the limited warranty shall apply to the replacement product for the remaining initial warranty period.

GGen Distribution Corp. shall not be held responsible for any damage caused by the operation of the unit, be it incidental or consequential or any type including, without limitation, damage or injury caused to other products or machinery or buildings. Nor will responsibility be accepted for loss of time or profit, loss of finished product, or for any inconvenience caused in any way whatsoever.